



Shaping **Australian** Gardens



STATE LIBRARY®
NEW SOUTH WALES

Principal sponsor

Major partners



Geoffrey & Rachel O'Connor
Graham Bradley AM & Charlene Bradley

State Library of NSW
Macquarie Street Sydney 2000 Australia
Telephone +61 (0) 2 9273 1414
www.sl.nsw.gov.au

Follow us on    
#dreamgarden @statelibrarynsw

Published to accompany the exhibition
Planting Dreams: Shaping Australian Gardens,
a free exhibition at the State Library of NSW
3 September 2016 – 15 January 2017

Exhibition opening hours:
Weekdays 9 am to 5 pm
Thursdays until 8 pm
Weekends 10 am to 5 pm

Curator: Richard Aitken
Curatorial liaison: Sarah Morley
Creative producers: Jennifer Blunden
& Jo de Monchaux
Senior exhibition designer: Matthew Guzowski
Graphic designer: Rosie Handley
Editor: Sarah Fitzherbert
Creative producer, multimedia: Sabrina Organo
Senior conservator: Helen Casey
Registrar: Caroline Lorentz
Photography: Merinda Campbell
Latin translation: Robert Cowan
French translation: Victoria Souliman

Printer: SEED print
Cover paper: Stephen Smart White
Body paper: Sumo Offset
Print run: 8000
P&D 4635-9/2016
ISBN: 0 7313 7233 6

© State Library of NSW September 2016



The State Library of NSW is a
statutory authority of, and principally
funded by, the NSW Government.



Shaping **Australian** Gardens



STATE LIBRARY®
NEW SOUTH WALES



Foreword

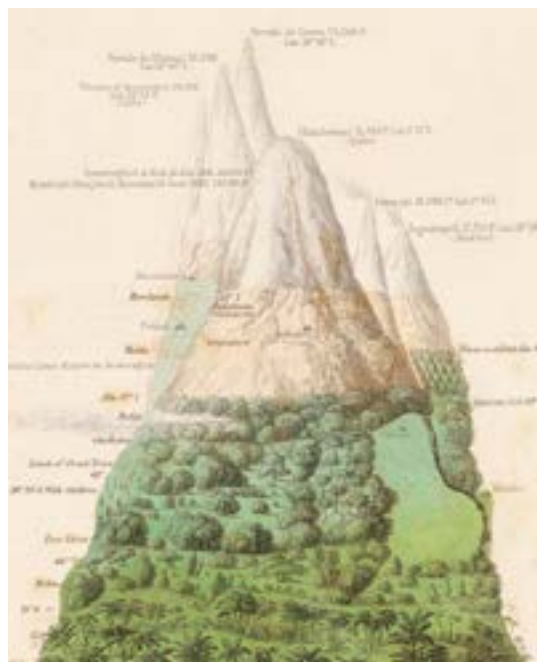
Gardens and gardening are at the heart of our understanding of Australia. From the first European arrivals' observations of 'the biggest estate on earth', as Bill Gammage labelled the land shaped by Aboriginal systems of land management, to the manicured lawns of suburbia, we have seen our country largely through gardeners' eyes.

What better reason than the 200th birthday of our neighbour, the Royal Botanic Garden, to present this spectacular exhibition, *Planting Dreams: Shaping Australian Gardens*, and the companion exhibition of contemporary garden photography, *Planting Dreams: Grand Garden Designs*. Since its foundation in June 1816 at Farm Cove, where the first colonists attempted to sow their exotic seeds, the Botanic Garden has been a haven for city dwellers and tourists, inviting strolling, lunching, study and contemplation, as well as a serious scientific institution.

Well represented in this Library's collection, gardens, botany, horticulture and landscape design feature in rare books and manuscripts, paintings and prints, bush sketches, photographs, books and guides. Historian Richard Aitken has spent two years researching that rich collection to curate this exhibition and author a major companion publication that will find a place on every garden lover's bookshelf.

Our designers and curators have created a luxurious tapestry, drawing on enthralling collection items including rare printed books from as early as the 15th century, and works on paper such as Joseph Lycett's *Corroboree at Newcastle*, JT Richardson's *Garden Palace, Sydney* and Myles Dunphy's *Birds-eye View of Pass from King's Tableland to Cox's River*.

This major undertaking has been made possible through the generosity of passionate supporters including the Australian Garden History Society. Long-term State Library supporters Graham Bradley AM and Charlene Bradley and Geoffrey and Rachel O'Connor have once again provided significant and valued support for the exhibition, and we welcome the TOGA Group as a new Library supporter.



The exhibition also features a number of key items generously lent by a very enthusiastic group of lenders: the Royal Botanic Garden Sydney, the State Library of Victoria, the Tasmanian Archives and Heritage Office, Charles Darwin University, the family of Jean Walker, and Catherine O'Neill.

Our aim in developing this exhibition and its accompanying book was to thrill a wide audience with these images from the collection and entice keen and casual gardeners to visit the Library. Watch out for events and updates through the course of the exhibition.

We hope, in presenting our *Planting Dreams*, we inspire you to plant yours.

DR ALEX BYRNE
NSW State Librarian & Chief Executive

OPPOSITE: ANDERSON & CO., SYDNEY
CATALOGUE OF SEEDS AND PLANTS (DETAIL), 1897
Q635.0994/36 BOX 1/CLOUGH NO. 511

ABOVE: 'PHYTOLOGY & ZOOLOGY NO. 1', IN *THE PHYSICAL ATLAS: A SERIES OF MAPS & NOTES ILLUSTRATING THE GEOGRAPHICAL DISTRIBUTION OF NATURAL PHENOMENA* (DETAIL), 1848, ALEXANDER KEITH JOHNSON (AUTHOR), EDINBURGH & LONDON, TX00082



Planting Dreams: Shaping Australian Gardens

We're all gardeners at heart, even if we've only raked the leaves or put out the green bin, even if we enjoy just *being* in gardens. Gardening is healthy, productive and uplifting, and it seems Australians can't get enough of it.

It may come as a surprise that the State Library of NSW is also a great lover of gardens and gardening. For 190 years the Library and its predecessor, the Australian Subscription Library, have been documenting Australian gardens – and not only gardens, but botany, horticulture and landscape design.

Together, this love of gardening and its rich documentary heritage form the basis of *Planting Dreams: Shaping Australian Gardens*. Central to the exhibition is the idea that gardening is both an intensely personal quest and a communal and cultural pursuit; it is the relationship between these two aspects that gives the exhibition its unifying theme. So, rather than presenting the items chronologically, the exhibition meanders through more than five centuries of garden history in eight themes, or 'courts', which look at some of the key ideas, inspirations and technologies that have combined to shape the way we use and enjoy gardens today.

The items on display date from 1499 to the present, showing that our garden making has taken place within long and diverse traditions. The exhibition begins around the time of the Renaissance, in part because of the nature of the Library's collection, but more importantly because a profound transformation in European thinking took place during this time. People began to see the relationship between themselves and the natural world in an entirely different way. Humanist thinking of the Renaissance saw garden making as a means of expressing human ascendancy over nature, but this went beyond just physical control. People began to trust the evidence of their own observation to inform their beliefs and practices, rather than relying on beliefs imposed by the church or state. This new way of thinking led to the beginnings of modern scientific thought. New means of understanding and naming plants through scientific classification led to the birth of botanic gardens and advances in the science of botany. And these ideas



made their way around the world after a revolution in printing techniques allowed enthusiasts to disseminate information globally in books and magazines.

However, influences on gardens and gardening in Australia did not only come from Europe. Other cultures have also given us their ideas and ideals. Items of beauty such as delicate Japanese woodblock prints, paintings and other artworks by Indigenous Australians, and the various creative endeavours of recent immigrants, including gardens both productive and decorative, are some of the diversity of traditions and perspectives that have influenced and continue to influence garden making in our increasingly global world.

Take time to amble through these rooms to discover the beauty of the objects and the richness of the places, ideas and stories they depict or represent. My hope is that we can all share in the humanity of growing things and find fresh inspiration for our 'planting dreams'.

RICHARD AITKEN
Exhibition Curator

OPPOSITE: 'THE BLUE PASSION FLOWER' (DETAIL), IN *THE TEMPLE OF FLORA ...*, 1799–1807, ROBERT THORNTON (AUTHOR), LONDON, SAFE/RB/RX581.9/1

ABOVE: HANS STADEN (AUTHOR), JOHN WHITE (ILLUSTRATOR), *AMERICAE TERTIA PARS MEMORABILĒ PROVINCIAE BRASILIAE HISTORIAM CONTINĒS ...* [THE THIRD PART OF AMERICA, CONTAINING THE NOTABLE HISTORY OF THE PROVINCE OF BRAZIL ...], 1592 DSM/Q910.8/B

List of works

GARDENS OF THE MIND

Gardens are works of human imagination as much as labour. They can be as simple as a vegetable plot, as complex as the extravagant grounds of Versailles, or as symbolic as a memorial park. In an uncertain world, gardening throughout the year gives our lives a welcome rhythm – the toil of digging, the pleasure of choice, the anticipation of beauty or bounty.

Garden making is as much an expression of our culture as painting, writing or architectural design. Gardeners draw on influences of the past to imagine the future, whether it is the coming spring or a long-term legacy for future generations.

Reproduced behind text panel:

Robert Thornton (author)
'The Blue Passion Flower' (detail), in *The Temple of Flora; or Garden of Nature, Being Picturesque Botanical Plates of the New Illustration of the Sexual System of Linnaeus, 1799–1807*
Self-published, London
plate 17
SAFE/RB/RX581.9/1

THE INFLUENCE OF HUMAN THOUGHT

Reproduced on text panel:

George Molnar (artist)
'D.H.L.', in JD Pringle, *Australian Accent, 1959*
Chatto & Windus, London
page 43
980.1/14

Thomas More (author)
De Optimo Reip. Statu, deque Noua Insula Vtopia [On the Best Condition of a Commonwealth, and on the New Island of Utopia: A Truly Golden Handbook, and No Less Beneficial than Entertaining], 1518
2nd edition, Johann Froben, Basel
pages 12–13
RB/2619

Hans Staden (author), John White (illustrator)
Americae Tertia Pars Memorabilē Provinciae Brasiliae Historiam Continēs ... [The Third Part of America, Containing the Notable History of the Province of Brazil ...], 1592
Theodor de Bry, Frankfurt
pages 144–45
Bequeathed by DS Mitchell, 1907
DSM/Q910.8/B

'Veue du Jardin des Thuilleries comme il est à present 1680' [View of the Tuilleries Garden as it is today in 1680], in Adam Perelle (editor), [Views of Paris: chiefly consisting of engravings], n.d. [c. 1680], n.p.
N Langlois, Paris
RB/DQ944.36A/5

John Locke (author)
An Essay Concerning Humane Understanding, in Four Books, 1690
Printed for Thomas Basset, London
title page
Purchased from Peter Harrington, London, 2015
RB/Q729

Audio: Interview with Richard Aitken regarding John Locke's *An Essay Concerning Humane Understanding, in Four Books*
Running time: about 4 minutes 30 seconds

John Dryden (translator), F Cleyne (illustrator), Wenceslas Hollar (engraver)
The Works of Virgil: Containing His Pastorals, Georgics, and Aeneis ..., 1697
Jacob Tonson, London
page 71 & plate facing
Acquired 1994
RB/DQ873.1/4

[Denis] Diderot & [Jean Le Rond] d'Alembert (editors)
Encyclopédie, ou Dictionnaire Raisonné des Sciences, des Arts et des Métiers, par une Société de Gens de Lettres [Encyclopedia, or Systematic Dictionary of the Sciences, Arts and Crafts, by a Society of Men of Letters], 1751
1st edition, Paris
folding table facing page xlvi
Acquired 1956
RB/Fo34/01 vol.1

GARDEN DREAMS

Reproduced on text panel:
Walter Burley Griffin (architect) & Marion Mahony Griffin (architect & artist)
Commonwealth of Australia Federal Capital Competition: View from Summit of Mount Ainslie (detail), 1912
Watercolour on paper
Courtesy National Archives of Australia (Series no A710)

JC Loudon (author), R Branston (engraver)
An Encyclopaedia of Cottage, Farm and Villa Architecture ... Illustrative of the Principles of Architectural Science and Taste on which the Designs for Dwellings Are Composed, and of Landscape Gardening ..., 1832
Longman, Rees, & Co.; Treuttel, Würtz & Richter, London; Treuttel & Würtz, Paris and Strasburg; Black, Edinburgh; Carvill, New York; Gray & Bowen, Boston; Carey & Lee, Philadelphia; Howe, Sydney; and Melville, Hobart Town
part 7, December 1832
Presented by Lady Stanham, Camden Park, 1955
728.6/1

M Waller Clifton (author), Thomas Greensill (architect)
Plan of the Intended Town of Australind, on Leschenault Inlet, Western Australia, as Finally Arranged by M. Waller Clifton, Esq., F.R.S. Chief Commissioner of the Western Australian Company in Australia ..., 1841
Smith Elder & Co., London
Z/M3 851.139/AUSTRALIND/1841/1

'Garden-City: Ward and Centre', in E Howard, *To-morrow: A Peaceful Path to Real Reform, 1898*
Swan Sonnenschein, London
plate 3, facing page 14
also plate 1, facing page 8 (reproduction above)
T0057083

Norman Weekes (landscape architect), E Norsa (artist)
'Sydney's future airport', 1928
Pencil and ink on paper
Purchased July 1989
V1/Aer/1

SYMBOLISM IN THE GARDEN

Reproduced on text panel:
Anderson & Co., Sydney
'Plant a Tree Every Birthday', *Anderson's Catalogue of Trees & Shrubs, c. 1949*
Catalogue cover
Ephemera/Horticulture/pre-1990

After Utagawa Toyokuni I
[Lady tying a poem to cherry tree], c. 1796–1800
Woodblock print, panel of a triptych
RB/F761/4

H Repton & J Adey Repton (authors/illustrators)
Fragments on the Theory and Practice of Landscape Gardening, Including Some Remarks on Grecian and Gothic Architecture ..., 1816
J Taylor, Architectural Library, London
plate facing page 226
Purchased 1889
RB/DQ711/9

- Joseph Lycett (artist)
'View of the Female Orphan School, near Parramatta, New South Wales', 1825, in *Views in Australia, or, New South Wales & Van Diemen's Land Delineated: in Fifty Views ...*, 1824–25
J Souter, London
Bequeathed by DS Mitchell, 1907
DSM/Z/C 989

Artist unknown
'Jane Elizabeth Blaxland', n.d. [c. 1835–44]
Oil on wood
ML 446

Thomas Balcombe (attributed)
[Aboriginal hunting], n.d. [c. 1850]
Oil painting
Transferred from the Art Gallery of New South Wales, 1920
ML 568

'The Gardener's Wages', in Sidney Nolan, *Paradise Garden: Paintings, Drawings and Poems, with Introduction by Robert Melville, 1971*
R Alistair McAlpine, London
pages 10–11
Purchased from Douglas Stewart Fine Books, 2010
MRB/Q64

Gunnar Brusewitz (illustrator)
Illustration for 1973 Nobel Prize for Literature diploma based on themes from laureate Patrick White's novel *The Tree of Man* (1955), [c. 1973]
Presented by Patrick White, 1974
SAFE/R643

Margaret Woodward (artist)
Faith Bandler, 1993
Oil on canvas
Donated by Faith Bandler, 1998
ML 1174

WARTIME DREAMS

Reproduced on text panel:

Maker unknown

'Far from You but Thinking of You' (detail), 1914–18

France

Embroidered postcard

Ephemera/World War 1/1914-20/Folder 8

Ida Rentoul Outhwaite (illustrator)

'Pierrot and Pierrette', unpublished illustration for *Elves and Fairies*, c. 1915

Watercolour

Museum of Australian Childhood, Series 12
Transferred to the State Library of NSW from the National Trust of Australia (NSW), 1997

PXD 725/no. 967

Diary of George McClintock, 7 June 1916 to 6 February 1917

pages 19–20

Purchased from Mr George McClintock, 1919

MLMSS 2783/Item 3

- **'Subscribe to the Peace Loan', n.d. [c. 1919]**

John Sands Ltd, Sydney

Poster

POSTERS 474/6

C Bruce Dellit (architect & artist)

'ANZAC War Memorial, Hyde Park, Sydney', 15 September 1930

Wash drawing

XV1/Mon War/1

Gotthilf Heinrich von Schubert

***Naturgeschichte des Pflanzenreiches in Bildern* [Illustrated Natural History of the Plant Kingdom], 1853–54**

Stuttgart and Esslingen

plate 17, with provenance letter loosely inserted, n.d. [c. 1972–85]

Lent by Daniel Solander Library, Royal Botanic Garden Sydney (SC 580.12/55)

DYNAMIC NATURE

Nature is the dynamic basis for our garden making and the backdrop for our creativity. We take this natural wealth and its botanical riches, dream up ideas and bow to influences, call on the art of design and the science of horticulture, and create a garden. Aboriginal people were Australia's first gardeners, cool burning the land to cultivate grasses that supported the animals that were their food.

Nature knows no political boundaries; the plants that inspire our gardens have come from across the globe. But it is the beauty of our Australian flora that gives our gardens their national flavour.

Reproduced behind text panel:

John Lewin (artist)

'*Crinum pedunculatum* R. Br.' (detail), 1808

Watercolour

V*/Bot/1

OBSERVING NATURE

Reproduced on text panel:

John Lewin (artist)

'*Banksia serrata*', c. 1803, in 'Botanical Sketches of Australian Plants', c. 1803–06

Watercolour, pen, ink and pencil drawings, 257 sheets, hinged into booklets., Purchased from Mrs Alsop, 1911

SAFE/PXC 304/Box 1/no.19

John Lewin (artist)

'*Hibiscus heterophyllus*', 1802, in JW Lewin, GP Harris, GW Evans and others, 'Australian Paintings, 1796–1809'

Watercolour

vol. 2, following page 2

Purchased 1950

PXD 388

Joseph Lycett (artist)

'Native Cherry, [obscured] Hunters River N.S. Wales; Native Rose, New South Wales, *Borronea serrulata*'; and untitled drawing of a falcon, in album of drawings by Captain James Wallis & Joseph Lycett, c. 1817–18

Watercolour and collage

page 3

Purchased 2011

SAFE/PXE 1072

Watanabe Shōtei (artist)

[Insect on plant], in 'An Album of Flowers and Birds', n.p., n.d., [c. 1890]

Woodblock print

Presented by the Roycroft Family, 1929

RB/DS761/41

- Margaret Flockton (artist)
'Broad-leaf wattle and honey flower', from *Australian Wild Flowers*, series 1, n.d. [c. 1902–03]
Produced by the American Tobacco Company, Proprietors of 'Cameo', 'Old Judge', 'Vanity Fair' and 'No.1' Cigarettes
Chromolithograph
Sydney
RB/F581.9901/1

ENGAGING WITH NATURE

Reproduced on text panel:

Max Dupain (photographer)

Muller House, Bynya Rd, Whale Beach, 1956

Digital photoprint

Purchased 2007

PXD 1013/64

Artist unknown

***Picnic at Mrs Macquarie's Chair*, n.d. [c. 1855]**

Oil painting

Presented by Sir William Dixson, 1934–35

DG 265

John William Lindt (photographer)

Summer, Lindt's Hermitage, Black's Spur, 1894

Silver gelatin photoprint, toned with sodium sulfide

Presented by Mrs H Cazneaux, 1960

SV2B/BlaS/2

Roy Fluke (artist)

Rainmaker, 1947

Oil on board

Bequeathed by Dr RJ Hope, 1954

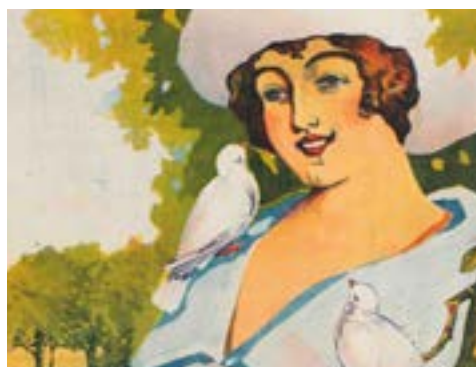
ML 589

Deborah Wurrkidj (artist)

Native Grass, 2003

Etching with chine collé on Hahnemuhle paper

Charles Darwin University Art Collection (NTU989)







LESSONS FROM THE LANDSCAPE

Reproduced on text panel:

W Ahlfeld (author), HP Dickens (artist)

The Cultivation of the Native Flowers of Australia, Part I, c. 1931

The Rangers League, Sydney
cover
581.991/A

Alexander Keith Johnston (author)

'Phytology & Zoology No. 1', in The Physical Atlas: A Series of Maps & Notes Illustrating the Geographical Distribution of Natural Phenomena, 1848

W Blackwood, Edinburgh & London
TX00082

Eugene von Guérard (artist)

Sunset in New South Wales, 1865

Oil on canvas

Presented by Mr Bell, 1953

ML 258

WC Piguénit (artist)

In the Valley of the Grose, 1880

Oil painting

Bequeathed by DS Mitchell, 1907

ML 571

Myles Dunphy (artist)

'Birds-eye View of Pass from Kings Tableland to Cox's River', 1912, sketch tipped into Diary, book 2, in Myles Dunphy papers mainly relating to the bushwalking conservation movement, 1905–84 page 21

Bequeathed by Myles Dunphy, 1985

MLMSS 4457/Box MLK3281

Beau—Maris—or Bare—Maris?, n.d. [c. 1960]

Beaumaris Tree Preservation Society

Fraser & Morphet, Melbourne

Ephemera/Horticulture/pre-1990

Why Green Bans?, n.d. [c. 1973], in the records of the 'Battlers for Kelly's Bush'

Folding poster

Presented by Mrs K Lehaney and Ms M Sheehan, 1991

MLMSS 5549/Box 1/Item 3

Bruce Petty (cartoonist)

Progress & Preservation, Must There Always Be a Conflict?, 1 June 1973, in the records of the 'Battlers for Kelly's Bush'

Poster

Presented by Mrs K Lehaney and

Ms M Sheehan, 1991

MLMSS 5549/Box 2/Item 3

< IMAGE FROM PREVIOUS PAGE:

JT RICHARDSON (ARTIST)

GARDEN PALACE, SYDNEY, c. 1879–82

XV1/PUB/GAR P/2

INSPIRING CULTURE

Humans have a dynamic relationship with the land, based on tradition and usage. Cultural imagery and references can come from landscapes, environments and even individual plants, but meanings often differ. One culture may see a barren desert where another sees a vibrant ecosystem; one may see farmland where another sees their spiritual and ancestral home.

Gardens are also part of our culture, celebrated in poetry, graced by sculpture, the setting for architecture and a subject for painters. In turn these arts have profoundly influenced garden making, providing underlying stories, dictating style or fashion, and as literary or artistic inspiration.

Reproduced behind text panel:

Elizabeth Mathews & William Hooker (artists)

'The Foxley Apple' (detail), in Thomas Andrew Knight, Pomona Herefordiensis, Containing Coloured Engravings of the Cider and Perry Fruits of Herefordshire ..., 1811

Agricultural Society of Herefordshire, London
plate 14 [plates watermarked 1817]

RB/DQ634.1/1

EXPLORATION AND EXPLOITATION

Reproduced on text panel:

Hans Staden (author), John White (illustrator)

Americaē Tertia Pars Memorabilē Provinciae Brasiliae Historiam Contines ..., [The Third Part of America, Containing the Notable History of the Province of Brazil ...], 1592

Theodor de Bry, Frankfurt

pages 144–45

Bequeathed by DS Mitchell, 1907

DSM/Q910.8/B

Evert Gijsbertsz (illustrator)

Map of Africa, Asia and the East Indies, 1599

Hand-coloured manuscript on parchment

Bequest of Sir William Dixson, 1952

DG 446

Nikolaus Joseph von Jacquin (author)

Selectarum Stirpium Americanarum Historia ...

[An Account of Selected American Plants ...], 1763

Kraus, Vienna

title page, vol. 2

Lent by Daniel Solander Library, Royal Botanic Garden
Sydney (SC Q581.9729 J1)

● Joseph Lycett (artist)

Corroboree at Newcastle, n.d. [c. 1818]

Oil painting on wooden panel

Presented by Sir William Dixson, 1938

DG 228

'Interview with the natives at Luxmore Head in Melville Island', c. 1818, in Phillip Parker King, 'Album of Drawings and Engravings, 1802–1902'

Ink and wash on paper

Acquired from the King Family Estate, 1933

PXC 767/ no. 64

'His Majesty's Cutter Mermaid Lt. P P King 1817', in Phillip Parker King, 'Album of Drawings and Engravings, 1802–1902'

Pencil on paper

Acquired from the King Family Estate, 1933

PXC 767/ no. 85

John Lewin (attributed)

The Plains, Bathurst, n.d. [c. 1815–16]

Watercolour

Bequeathed by DS Mitchell, 1907

V*/Expl/2

Audio: Interview with Jonathan Jones regarding

The Plains, Bathurst, attributed to John Lewin

Running time: 3 minutes 50 seconds

R Dale (artist)

Panoramic view of King Georges Sound,

Part of the Colony of Swan River, 1834

Hand-coloured aquatint

Robert Havell, London

Bequeathed by DS Mitchell, 1907

PXB 3

● Jacob Janssen (artist)

Mr. Georg Nailors House Botofogo

near Rio di Janeiro, 1829

Ink and watercolour drawing

SV99/Braz/2

Sally McInerney (photographer)

'David Newton's protest campsite, Cowra

Common, 07/2004', in Aboriginal Protest Camp,

Cowra, July–August 2004

Digital photoprint

Presented by Sally McInerney, 2007

PXA 1094/12

POPULAR CULTURE

Reproduced on text panel:

Artist unknown

'A Becoming Christmas Decoration', in The Rural Australian, 1 February 1893

page 324

Q630.5/R

Diary of James Jones, 1868

page 33

Lent by Daniel Solander Library, Royal Botanic Garden

Sydney (MS 920J)

JL Mott Iron Works

Illustrated Catalogue of Statuary, Vases, Settees,

etc., for Parks, Gardens and Conservatories ..., 1875

ED Slater (printer), New York

plate 80

Donated by EO O'Connor, 1955

TX00593

JT Richardson (artist)

Garden Palace, Sydney, c. 1879–82

Ink and watercolour

Purchased 1957

XV1/PUB/GAR P/2

Audio: Interview with Jonathan Jones regarding

JT Richardson's Garden Palace, Sydney

Running time: 4 minutes 15 seconds

May Gibbs (author & illustrator)

'Bib and Bub: Their Adventures', 1925

Cornstalk Publishing Company, Sydney

proof pages

Presented by Dr WN Shand, 1970

MLMSS 2048/1B/Item 7

RESPECTING UTILITY

Plants have sustained, clothed and sheltered people across time. We have consumed them as food and medicine, worn them as clothing and ornament, and woven them into roofs and fabrics. Gardening has ensured the survival and health of all human societies.

Productive plots of edible plants have their own unintentional beauty through order, neatness and regularity. So do other designed landscapes such as orchards, vineyards and farms. Such is the depth of the human inspiration for garden making that agrarian societies throughout the world have planted and tended their local agricultural landscapes with universal order and care.

Reproduced behind text panel:
Ch. Creswell & Co., Hobart
Creswell's Seeds (detail), c. 1940
catalogue cover
Presented by Richard Clough July 2014
Q635.0994/36 Box 3/Clough no. 1518

ORDER IN THE GARDEN

Reproduced on text panel:
RVF Eldridge (author,) Hedley Sanders (artist)
Concrete for Amateurs & Builders, 1935
United Press, Melbourne
cover
Q691.3/E

John Worlidge (author)
Systema Horticulturae; or, The Art of Gardening: In Three Books ..., 1677
Tho. Burrell & Will. Hensman, London
page 16 and plate facing
RB/1632

William Lawson (author)
A New Orchard & Garden, bound with
G Markham & W Lawson, *A Way to Get Wealth: Containing Six Principal Vocations ... in which Every Good Husband or House-wive May Lawfully Imploy Themselves ...*, 1683
14th edition, Hannah Sawbridge, London
title page
Acquired 1992
RB/DS640.2/26

Recueil des Planches du Dictionnaire Encyclopédie de l'Art Aratoire et du Jardinage [Collection of Plates from the Dictionary Encyclopaedia of the Art of Tilling and Gardening], 1802
H Agasse, Paris
plate 26
RB/DQ034/10 (SET)

- Francis Fowkes (illustrator)
Sketch & Description of the Settlement at Sydney Cove Port Jackson in the County of Cumberland ..., 1788
R Cribb, London
Engraving with watercolour wash, 1789
SAFE/MB2/811.17/1788/1

'George Dixon's house, Vandiemans Island, Copied from a Drawing [sic] by Geo. Dixon Cockfield, 8th Month 1832, Aged 12'
[Original drawing by E Dixon, dated 1827, held by the National Library of Australia]
V6B/1

George Wyndham (attributed)
'Plan of Garden, Vineyard, and Orchard on Dalwood Estate', c. 1832
Ink and pencil sketch in bound notebook
Bequeathed by DS Mitchell, 1907
A 714

UTILITY AND ORNAMENT

Reproduced on text panel:
GW Evans (artist)
'Government House, Parramatta', c. 1805, in JW Lewin, GP Harris, GW Evans and others, *'Australian Paintings, 1796-1809'*
Watercolour
vol. 3, following page 3
Purchased January 1950
PXD 388

Elizabeth Mathews & William Hooker (artists)
'The Foxley Apple', in Thomas Andrew Knight, *Pomona Herefordiensis, Containing Coloured Engravings of the Cider and Perry Fruits of Herefordshire, with such New Fruits as Have Been Found to Possess Superior Excellence*, 1811
Agricultural Society of Herefordshire, London
plate 14 [plates watermarked 1817]
Australian Subscription Library
RB/DQ634.1/1

JC Loudon (author)
Observations on Laying out Farms, in the Scotch Style, Adapted to England, Comprising an Account of the Introduction of the Berwickshire Husbandry into Middlesex and Oxfordshire, 1812
John Harding, London
plate 1
Purchased 1978
RB/F0049

Lachlan Macquarie
'Government and General Orders', in *The Sydney Gazette and New South Wales Advertiser*, 13 October 1810
page 1
RB/BRN 545

Jacob Janssen (artist)
Panorama of Calcutta from the Ochterlony Monument on the Meydan, 1832
Watercolour
Presented by LW Robinson
SAFE/PXD 577

THE HOME FRONT

Reproduced on text panel:
Arthur Yates & Co. Ltd, Auckland, New Zealand
Yates' Spring Gardening, 1944
inside front cover
Q635.0994/36/Box 14/Clough 1034

The Australian Small-holder, June 1917
Published by Mrs RC Packer for the Women's Horticultural and Home Industries Society, Ltd, Sydney
vol. 1, no. 1, page 1
Q635.05/A

Department of Commerce & Agriculture, Canberra
'Join the Army on the Food Front; Grow Your Own Vegetables', 1943
Poster
Posters 1121

Arthur Yates & Co. Pty Ltd
Yates' Seed Book of What & When to Sow, n.d. [c. 1944]
Sydney
cover
Presented by Richard Clough, 2014
Q635.0994/36/Box 15/Clough 968



INTENSIVE HORTICULTURE

Reproduced on text panel:
Photographer unknown
'Woolabrah Bore – Moree District, Depth 1988 Ft., Flow 500,000 Gal., Temp 90 % Fah.', c. 1892, in **'Photographs–New South Wales'**, 1879 – c. 1892
NSW Government Printer
PXD 855

Gordon, Dermer & Edmonds, Seedsmen
A Catalogue of Kitchen Garden, Grass, Flower, Tree, and Shrub Seeds ..., n.d. [c. 1798]
London
cover
Brabourne Collection, transferred to the Mitchell Library 1910
SAFE/Banks Papers/Series 19/297

Medals awarded to Gregory Blaxland for wine export from New South Wales, 1823 & 1828, by the Royal Society of Arts, London
Presented 2002
SAFE/R 266

Daryl Lindsay (artist)
Fruit Growing in Australia: The Land of Opportunity, 1924
Commonwealth Immigration Office, Melbourne
cover of pamphlet
Pam file/633.6–634.9 (634 A)

Bill Mollison & David Holmgren (authors)
Permaculture One: A Perennial Agriculture for Human Settlements, 1978
Corgi, Melbourne
Q630/7

Maggie Beer (author), Daniel New (graphic designer)
Maggie's Harvest, 2007
Penguin Lantern, Melbourne
Purchased 2007
MRB/Q21

Louise Whelan (photographer)
This Catholic Burundi Family Share a Garden with their South Sudanese Neighbours, New Lambton, Newcastle, October 2010
Digital photograph
Purchased from Louise Whelan Photography, 2011
a5482

Projection: Images from the State Library of NSW collection

DESIGNING WITH PLANTS

Plants are the stars of gardens. Individually or in groups, their form, foliage, flowers, fruit and scent animate gardens in ways that often relegate garden structures and architectural elements to supporting roles. Whether grown for use or purely for ornament, plants delight all our senses and give us pleasure.

Plants are also crucial in creating a 'sense of place' – think of the Port Jackson figs on Sydney's Art Gallery Road, or the Norfolk Island pines lining Manly Beach. The species we choose to plant or retain dictate the character of a garden or public place and reflect changing fashions and styles.

Reproduced behind text panel:
Joseph Dalton Hooker (illustrator), WH Fitch (lithographer)
'*Rhododendron dalhousiae*' (detail), in *The Rhododendrons of Sikkim-Himalaya: Being an Account ... of the Rhododendrons Recently Discovered in the Mountains of Eastern Himalaya ...*, 1849
Reeve & Co., London
plate 2
Purchased February 1885
RB/RF635.92/3

BOTANICAL BOOKS AND MAGAZINES FOR GARDENERS

Reproduced on text panel:
Lex Fuaux (artist)
The Spine: Journal of the Cactus and Succulent Society of Australia, January 1948
vol. 1, no. 1, cover
Private collection

Rembert Dodoens (author)
Florum et Coronariarum Odoratarumque Nonnullarum Herbarum Historia [An Account of Flowers and Some Plants which are Suitable for Garlands and Sweet-scented], 1569
2nd edition, Christophe Plantin, Antwerp
pages 12–13
Bequeathed by Nelson Moore Richardson, 1926
RB/Richardson/088

- John Sims (editor), Sydenham Edwards (illustrator)
'*Lilium superbum*', in ***Curtis's Botanical Magazine; or, Flower-Garden Displayed: In which the Most Ornamental Foreign Plants, Cultivated in the Open Ground, the Green-house and the Stove, Are Accurately Represented in their Natural Colours ...***, 1806
T Curtis, London
vol. 24, plate 936
Purchased 1880
RB/DS580.5/2 (v.24)

Joseph Dalton Hooker (illustrator), WH Fitch (lithographer)
'*Rhododendron dalhousiae*' in *The Rhododendrons of Sikkim-Himalaya: Being an Account, Botanical and Geographical, of the Rhododendrons Recently Discovered in the Mountains of Eastern Himalaya ...*, 1849
Reeve & Co., London

plate 2
Purchased 1885
RB/RF635.92/3

PLANTS AND NATURALISM

Reproduced on text panel:
H Repton & J Adey Repton (authors/illustrators)
Diagram of a 'Ha Ha', in ***Fragments on the Theory and Practice of Landscape Gardening, Including Some Remarks on Grecian and Gothic Architecture***, 1816
J Taylor, London
page 79
Purchased 1889
RB/DQ711/9

GP Harris (illustrator), 1808; John Lewin (copyist)
'A View in Colonel Patersons Garden at Yorkton Port Dalrymple', 1809, in **JW Lewin, GP Harris, GW Evans and others, 'Australian Paintings, 1796–1809'**
Watercolour
vol. 1, following page 3
Purchased 1950
PXD 388

Gabriel Thouin (illustrator), C Mott (lithographer)
'Jardin d'agrément' [Pleasure garden], in *Plans Raisonnés de Toutes les Espèces de Jardins [Systematic Plans of All Sorts of Gardens]*, 1828
3rd edition, Chez Madame Huzard, Paris
plate 50
Purchased 1981
RB/F0108

GP Wright (photographer)
'Tropical Foliage–Botanic Gardens' in 'Views of Brisbane', 1876
Government Printing Office, Brisbane
album
Presented 1947
PXA 542/29

- Anderson & Co., Sydney
Anderson's Seeds and Plants 1934–5, 1934
catalogue cover
Presented by Richard Clough, 2014
Q635.0994/36/Box 1/Clough 942

Nindethana Nursery, Dripstone, NSW
Australian Native Plants: New and Enlarged Catalogue 1947
catalogue cover
Presented by Richard Clough, 2014
Q635.0994/36/Box 16/Clough 1923

Jean Walker (illustrator); Betty Maloney, Jean Walker & Don Sands (designers)
'Design of Proposed Native Garden for the Home of Mr. Everitt ...', n.d. [c. 1965–66]
Ink on tracing paper
Sydney
Private collection

Richard Goodwin (architect & artist)
'Marsh Pond with Fog Sculpture and Moore behind', Sketch plans for the Sculpture Garden, Australian National Gallery and High Court of Australia, Canberra (drawn for Harry Howard & Associates), [c. 1979]
Purchased from the Harry Howard Trust, 2011
PXD 1082/no. 8

THE QUEST FOR NOVELTY

Reproduced on text panel:

Searl & Sons, Sydney

Searl's General Catalogue [of] Seeds, Plants, Bulbs, and Beautiful Flowers, 1898

page 67

Q 635.905/17

J Alvarez (lithographer)

A Catalogue of Agricultural, Garden, and Other Seeds; Fruit and Forest Trees, &c., Sold by Frederick Lipscombe, Nursery & Seedsman, New Wharf Market, Hobart Town, and Nursery, Sandy Bay, Tasmania, n.d. [c. 1864]

MLMSS 162/Box 21

CE Winn (artist)

Baptist Gardens, Redfern, 1877

Watercolour on paper

Bequeathed by Sir William Dixson, 1952

DL Pd 748

Louis van Houtte (author & publisher)

'Ficus parcelli', in Flore des Serres et des Jardins de l'Europe: Annales Générales d'Horticulture [Flora from the Glasshouses and Gardens of Europe: General Annals of Horticulture], 1877

Ghent, Belgium

vol. 22, plate 2273–74

P635.905/F2

A Goossens (artist), P De Pannemaeker (chromolithographer)

'Oncidium leopoldianum Rolfe', in J Linden, Lucien Linden, Em. Rodigas & RA Rolfe, Lindenia: Iconography of Orchids, 1891

Eug. Vanderhaeghen, Ghent

vol. 1, plate 274

Purchased 1916

RB/DQ584.15/1-2

Anderson & Co., Sydney

Catalogue of Seeds and Plants, 1897

plate page 33

Presented by Richard Clough, 2014

Q635.0994/36 Box 1/Clough 511

Searl & Sons, Sydney

Seeds, Plants, Trees, and Beautiful Flowers: Catalogue for 1902

rear cover of catalogue

Q635/S

Lasscocks Nurseries Pty Ltd, Lockleys, South Australia

Lasscocks Drive-in Garden Center Garden Guide and Catalogue, n.d. [c. 1966]

catalogue cover

Presented by Richard Clough, 2014

Q635.0994/36/Box 9/Clough 1400

Projection: Images from the State Library of NSW collection



DOMAINS OF PLEASURE

The dream of an enclosed garden goes back almost as far as human history.

A few years after the First Fleet arrived in Sydney Cove – and in the mistaken belief that the land was unoccupied – the early governors began granting pastoral land to new settlers, and to convicts who had been pardoned. In the early 19th century the authorities took greater control, and land was surveyed, subdivided and auctioned, creating enclosed places for garden making. A garden became essential to pleasurable living, whether you owned a large pastoral homestead or a suburban villa. Orchards and vineyards alongside ornamental plantings suggested the comfort and ease brought by wealth.

Yet these 'domains of pleasure' were not only the privilege of landholders. Also from the early 19th century, public parks and specialised botanic gardens could be enjoyed by the wider population. Today, our public gardens are a resource that demands careful stewardship.

Reproduced behind text panel:

A Goossens (artist), G Severeys

(chromolithographer)

'Cattleya rex', in J Linden, Lucien Linden, Em. Rodigas & RA Rolfe, Lindenia: Iconography of Orchids, 1891

Eug. Vanderhaeghen, Ghent

vol. 1, plate 265

Purchased January 1916

RB/DQ584.15/1-2

ESTATES OF PRIVILEGE

Reproduced on text panel:

Artist unknown

The Home (detail), 1 February 1926

SAFE/Q059/H1

Lachlan Macquarie

'The Governor's Diary & Memorandum Book Commencing on and from Wednesday the 10th Day of April 1816 ... At Sydney in N.S. Wales', entry for 13 June 1816

A 773 (Safe 1 / 360)



C Cartwright (illustrator)

'Plan of the Governor's Demesne Land Surveyed in the Year 1816'

Ink and wash on paper

Z/M3 811.172/1816/1

Joseph Lycett (artist)

'View on the Macquarie River, Van Diemens Land, near the Ford at Argyle Plains', in Views in Australia, or, New South Wales & Van Diemen's Land Delineated: in Fifty Views ..., 1824–25

J Souter, London

SV6B/MacR/1

William Lyttleton (artist)

Panshanger, Tasmania. The Seat of Joseph Archer Esquire, n.d. [c. 1835]

Tinted lithograph

Bequeathed by Sir William Dixson, 1952

DG 236

● Eugene von Guérard (artist)

[Stoneleigh, Beaufort, near Ararat, Victoria], 1866

Oil painting

Acquired from FT Sabin, 1953

DG 231

Audio: Interview with Bruce Pascoe's regarding Eugene von Guérard's [Stoneleigh, Beaufort, near Ararat, Victoria]

Running time: about 1 minutes 42 seconds

VILLAS OF DISTINCTION

Reproduced on text panel:

Artist unknown

The Residence of D.C.G. Laidley – Woolloomooloo [sic], c. 1831–36

Watercolour on paper

SV1/Res/Rose/1

John Glover (artist)

Hobart Town, Taken from the Garden Where I Lived, 1832

Oil on canvas

Presented by Sir William Dixson, 1938

DG 6

Frederick Garling (artist)

View of Retford Hall, Darling Point, Sydney, c. 1866

Watercolour

Presented 1996

ML 1130

Gerrit Fokkema (photographer)

Griffith Marsupial, Frank and Pierina Bastianon, 1987

Black-and-white photograph

Purchased from Garry Anderson Gallery, 1988

V1B/GRIF/2



Robyn Sweaney (artist)
Neighbourhood Watch, 2009
Acrylic on linen
Purchased from Robyn Sweaney, 2009
ML 1431

John Bokor (artist)
Collection Day, 2011
Oil on board
Purchased from King Street Gallery on William,
2013
ML 1304

PUBLIC PLEASURE

Reproduced on text panel:
Donald McDonald (photographer)
*'The Melbourne Botanical Gardens, the
Russian Guns and the Orchestra'*, in [Melbourne
buildings, streets, the Yarra River, and various
gardens], c. 1867–91
Bequeathed by DS Mitchell 1907
PXA 437 vol.2, f.49

Artist unknown (formerly attributed to either
Rhodius or Janssen)
[Race Course, Sydney, i.e. Hyde Park], c. 1847
Watercolour
SSV/81

CG Coulter (artist)
[Proposal for switchback railway (probably based
on Coney Island), Bondi Aquarium, Tamarama],
n.d. [c. 1888]
Watercolour
V1A/Bond/1

Artist unknown
[Sketch plan of Centennial Park], n.d. [c. 1887]
Ink and watercolour
Acquired 1992
Maps/0298

SUBURBAN IDYLL

Reproduced on text panel:
Lionel Lindsay (photographer)
'Norman and Ruby Lindsay', in, *'Portraits of
Norman and Lionel Lindsay, family and friends'*,
c. 1900–12
Photographs
ON 186

- Conrad Martens (artist)
[Lady in her bower], n.d. [c. 1841], in
*'Album of Cloud Studies, Mountain, Bush
and Harbour Scenes'*, c. 1841–50
following page 8
Bequeathed by Sir William Dixson, 1952
DL PX 28

Photographer unknown
'House near Sydney' [Holmewood, Newtown],
c. 1865–67, from *'Australian Sketches'* [mainly
scenes of Tasmania and New South Wales]
Alfred Lee collection, bequeathed by DS Mitchell,
1907
PXA 550/f. 29c

Vernon Hayles (illustrator)
'Floradora', in Olive Mellor, *Complete Australian
Gardener Illustrated*, [1952]
Colorgrature Publications, Melbourne
endpaper
Purchased 1965
635.9/18A1

Anderson & Co., Sydney
Anderson's Garden Book and Catalogue: Spring 1956
cover
Purchased 2015
635.905/45

Anya van Lit (photographer)
*'Shirley at South Grafton Takes in Her Favourite
Pink Flamingos at Night as Her Statues
Sometimes Get Stolen'*, in *Collection 17:
'Gardens and Front Yards' ...*, 2007–08
11 digital photographs (TIFF files), 2007–8,
Purchased from Anya van Lit, 2008
a2440 Online / no.1

SCIENCE IN THE GARDEN

Science has its origins in the study
of plants, easy subjects for close
observation. Local Indigenous peoples
were early natural scientists, with
detailed knowledge of the natural world
built up through careful and systematic
observation.

In Europe, herbal medicine during the
15th and 16th centuries developed into
the science of botany in the 17th century.
Plants brought back by explorers from
around the globe began to fill the botanic
gardens and medicinal 'physic gardens'
of Europe.

Scientific discovery was at the forefront
of much European exploration of
Australia, from the landing of William
Dampier on the north-west coast in the
late 17th century to the well-chronicled
voyages of the English and French in the
late 18th and early 19th centuries. They
all took back to Europe Australian seeds
to propagate in botanic gardens, or dried
specimens for the herbarium. Here in the
colony, early botanic gardens were also
showcases for both science and gardening.

Reproduced behind text panel:
Sarah Drake (artist), S Watts (engraver)
'Clianthus puniceus' (detail), in John Lindley,
*Note upon a Handsome and Hardy Plant, Called
Clianthus puniceus ... from the Horticultural
Transactions*, 1834
W Nicol, London
accompanying plate
RB/DQ580.8/1

BOTANY AND GARDENS

Reproduced on text panel:
Photographer unknown
*Board of Governors & Director, Adelaide Botanic
Garden, November 2nd, 1922*, Botanic Gardens of
South Australia
Reproduced courtesy Botanic Gardens of South
Australia

Author unknown
*Ortus Sanitatis: De Herbis et Plantis; de
Animalibus et Reptilibus; de Avibus et Volatilibus;*

*de Piscibus et Natatilibus; de Lapidibus et in Terre
Venis Nascentibus; de Vrinis et Earum Speciebus,
Tabula Medicinalis cum Directorio Generali
per Omnes Tractatus* [The Garden of Health:
On Herbs and Plants; on Animals and Reptiles;
on Birds and Winged Creatures; on Fish and
Swimming Creatures; on Stones and Things
Originating in the Veins of the Earth; on Urines
and Their Types, a Medicinal Index with a
General Guide through All the Treatises], 1517
Reinhard Beck, Strasburg
title page
Bequeathed by DS Mitchell, 1907
MRB/Q508.3 (16th Century)

R Hooke (author)
*Micrographia, or, Some Physiological Descriptions
of Minute Bodies Made by Magnifying Glasses:
With Observations and Inquiries Thereupon*, 1665
Jo. Martyn & Ja. Allestry, London
plate 1
Purchased from Peter Harrington, 2015
RB/Q728

Nehemiah Grew (author)
*The Anatomy of Plants: With an Idea of
a Philosophical History of Plants ... Read before
the Royal Society*, 1682
Self-published, London
plate 67
Bequeathed by DS Mitchell, 1907
DSM/Q581.7/G

Carl Linnaeus (author)
*Genera Plantarum: Eorumque Characteres
Naturales secundum Numerum, Figuram, Situm,
& Proportionem ...* [The Genera of Plants: And
Their Natural Characteristics according to
Number, Shape, Location and Proportion], 1778
Varrentrapp & Wenner, Frankfurt
fixed front endpaper and title page
Lent by Daniel Solander Library, Royal Botanic Garden
Sydney (SC 580.12/L65)

TRANSPORTING PLANTS

Reproduced on text panel:
Nathaniel Ward (author)
On the Growth of Plants in Closely Glazed Cases,
1852
2nd edition, John van Voorst, London
page 71
Private collection

John Ellis (author)
*Directions for Bringing over Seeds and Plants,
from the East-Indies and Other Distant Countries,
in a State of Vegetation*, 1771
London
frontispiece and title page
Purchased from Angus & Robertson, 1915
Q579.616/E

- M Darly (artist)
The Botanic Macaroni, caricature
of Joseph Banks, 1772
Etching
London
Purchased from Hordern House, 2004
P2/477

Artist unknown

'Porpoise Sloop's Quarterdeck shewing the manner in which the Garden Cabbin is fitted with Boxes, agreeable to Sir Joseph Banks's desire for the reception of Plants to be sent to Port Jackson', c. 1798

Ink plan on paper

Brabourne Collection, transferred to the Mitchell Library 1910

SAFE / Banks Papers / Series 19 / 294

UNDERSTANDING THE WORLD'S FLORA

Reproduced on text panel:

Nicolaas Laurens Burman (author)

Flora of the East Indies: To Which is Added ... A Listing of Flora of the Cape of Good Hope, 1768

Printed by Cornelius Haek, Amsterdam, & Johannes Schreuder, Leiden

plate 67, page 233

RB/DS581.954/14

Hendrik Adriaan van Rheede tot Drakenstein (author)

Hortus Indicus Malabaricus: Continens Regni Malabarici apud Indos Celeberrimi Omnis Generis Plantas Rariores ... [Plants of the Malabar Coast of India: Containing the Rarer Plants of Every Kind in the Very Famous Kingdom of Malabar in the Indies ...], 1678

Jan van Someren & Jan van Dyck, Amsterdam vol. 1, plate 1

Lent by Daniel Solander Library, Royal Botanic Garden Sydney (SC Q581.9548 R)

Georg Eberhard Rumpf (author), Johannes Burman (editor)

Herbarium Amboinense: Plurimas Conplectens Arbores, Frutices, Herbas, Plantas Terrestres & Aquaticas ... [Catalogue of the Plants of Ambon: Comprising Many Trees, Fruit Trees, Land and Water Plants ...] 1741

François Changuion, Jean Catuffe & Hermann Uytwerf, Amsterdam frontispieces, vol. 1

Bequeathed by DS Mitchell, 1907

DSM/F581.9/Set (v.1)

Henry Andrews (author)

The Botanist's Repository, for New, and Rare Plants, Containing Coloured Figures of such Plants, as Have not hitherto Appeared in any Similar Publication, 1797-98

Self-published, London

vol. 1, plate 69

Purchased 1910

Q581.7/A v.1

BOTANIC GARDENING

Reproduced on text panel:

Gabriel Thouin (author)

'Jardin Pharmaceutique' [Pharmaceutical Garden], in Plans Raisonnés de Toutes les Espèces de Jardins [Systematic Plans of All Sorts of Gardens], 1828

3rd edition, Chez Madame Huzard, Paris plate 11

Purchased 1981

RB/F0108

Richard Steele (author)

An Essay upon Gardening, Containing a Catalogue of Exotic Plants for the Stoves and Green-houses of the British Gardens, 1793

Self-published, York

plate 1 and page facing

Purchased 1992

Q635.9/37

MW Lewis jnr (illustrator)

'Plan of the Botanic Garden Sydney', 1838

Ink and watercolour on paper

ZM2 811.1729/1838/1

Eugene von Guérard (artist)

'Melbourne Bot. gardens 15.Oct.54', in 'Sketchbook XXII, No. 4 Australia, Apr. 1854 - Dec. 1857, 1858'

Ink and watercolour

Purchased from Clune Galleries, 1970

DGB 16/Vol. 1/f.12

- George Edwards Peacock (artist)

No. 4 Government House and Fort Macquarie Sydney N.S.W. from the Botanical Gardens, 1846

Oil on board

Presented by Sir William Dixson, 1929

DG 336

Audio: Interview with Bruce Pascoe regarding George Edwards Peacock's No. 4 Government House and Fort Macquarie Sydney N.S.W. from the Botanical Gardens

Running time: about 2 minutes

DEPICTING PLANTS AND GARDENS

We all have first-hand experience of plants and gardens, but to understand their history we generally rely on texts and images, some published and others preserved in manuscript form. Our research and knowledge would not be possible without highly developed artistic techniques of painting and drawing, and advances in printing throughout past centuries – woodcuts in the 15th century, followed by copper-plate engravings, lithographs and then photography. Now digital imagery is the order of the day.

Each artistic or printing technique has its own characteristics, suited to different ends. A well-taken photograph may convey the scenery of a garden, but a detailed pencil, ink and watercolour drawing still better achieves the precision required in botanical illustration. Back when the British were first exploring Australia, artistry and printing techniques had reached a high point, giving us a legacy of expertly finished botanical prints from around that time.

Reproduced behind text panel:

Robert Thornton (author)

'The Queen' [i.e. *Strelitzia regina*] (detail), in *The Temple of Flora; or Garden of Nature, Being Picturesque Botanical Plates of the New Illustration of the Sexual System of Linnaeus, 1799-1807*

Self-published, London

plate 11

SAFE/RB/RX581.9/1

PRINTING FROM WOOD: WOODCUTS AND WOODBLOCKS

Reproduced on text panel:

Author unknown

Ortus Sanitatis: De Herbis et Plantis ...

[The Garden of Health: On Herbs and Plants ...] (details), 1517

Reinhard Beck, Strassburg

folio t iiiii (recto), folio o ii (recto)

Bequeathed by DS Mitchell, 1907

MRB/Q508.3 (16th Century)



'Canapus' [Hemp], in Arnaldus de Villanova, *Incipit Tractatus de Virtutibus Herbarum* [Treatise on the Virtues of Plants], 1499
Simone Bevilacqua of Pavia, Venice
folio 48 (recto)
Bequeathed by Nelson Moore Richardson, 1926
RB/Richardson/Inc/224

Otto Brunfels (author)
Herbarum Vivae Eicones ad Naturae Imitationem ... [Images of Living Plants in Imitation of Nature ...], 1536
Johann Schott, Strasbourg
vol. 2, pages 86–87
Bequeathed by DS Mitchell, 1907
MRB/Q615/B (16th Century)

Leonhart Fuchs (author)
De Historia Stirpium Commentarii Insignes [Notable Commentaries on the History of Plants], 1542
Michael Isingrin, Basel
page 897
Bequeathed by DS Mitchell, 1907
MRB/F580/F (16th Century)

Mizuno Chūkyō kakushū (artist)
Sōmoku kin'yōshū: 7-kan. zenpen, kōhen [Brocade-leaf Collection of Plants and Trees], 1829
Published by Suharaya Mohē, Tokyo
vol. 6, page 4
Purchased 1880
RB/DQ581.952/4

PRINTING FROM COPPER: ETCHING AND ENGRAVING

Reproduced on text panel:
Nehemiah Grew (author)
The Anatomy of Plants: With an Idea of a Philosophical History of Plants ..., 1682
Self-published, London
plate 14
Bequeathed by DS Mitchell, 1907
DSM/Q581.7/G

Pierre Vallet (author, illustrator & engraver)
Le Jardin du Roy très Chrestien Louis XIII, Roy de France et de Navarre ... [Garden of the very Christian King Louis XIV, King of France and Navarre], n.d. [after 1623]
P Mariette, Paris
extra title page
RB/LF0003/V

Robert Thornton (author)
'The Blue Passion Flower', in The Temple of Flora; or Garden of Nature, Being Picturesque Botanical Plates of the New Illustration of the Sexual System of Linnaeus, 1799–1807
Self-published, London
plate 17
SAFE/RB/RX581.9/1

Aimé Bonpland (author), Pierre Redouté (illustrator)
'Metrosideros glauca', in Description des Plantes Rares Cultivées à Malmaison et à Navarre [Description of Rare Plants Cultivated at Malmaison and Navarre], 1813
P Didot l'ainé, Paris
plate 34
Bequeathed by DS Mitchell, 1907
MRB/F581/B

'Melon' and 'Fig', in George Brookshaw, *Pomona Britannica; or, A Collection of the Most Esteemed Fruits at Present Cultivated in Great Britain ...*, 1817
Bensley & Son for Longman, Hurst, Rees, Orme & Brown, London
plates 40 (melon) & 43 (fig)
Bequeathed by DS Mitchell, 1907
DSM/Q634/B

Humphry Repton (author & artist)
'Welbeck', in Sketches and Hints on Landscape Gardening ... the Whole Tending to Establish Fixed Principles in the Art of Laying out Ground, 1795
W Bulmer & Co., London
double-page plate (with flap open), facing page 30
Bequeathed by DS Mitchell, 1907
MRB/Q710/R

Robyn Mayo (artist)
'Carl Linnaeus was so impressed with the Natural History collections made on the Voyage he felt New South Wales should be called Banksia', 2003, from Specimens from New Holland – Three Etchings, 2000–03
plate 2
Purchased from Sturt Gallery, 2006
PXD 995

PRINTING FROM STONE AND STEEL: LITHOGRAPHY

Reproduced on text panel:
Artist and lithographer unknown
'Dendrobium phalaenopsis', in J Linden, Lucien Linden, Em. Rodigas & RA Rolfe, Lindenia: Iconography of Orchids, 1891
Eug. Vanderhaeghen, Ghent, Belgium
vol. 1, plate 274
Purchased 1916
RB/DQ584.15/1-2

'Rafflesia patma' in CL Blume, Flora Javae nec non Insularum Adjacentium [The Flora of Java and its Neighbouring Islands], 1828–36
Lithograph
Publisher unknown, Leiden
plate 2
Bequeathed by DS Mitchell, 1907
DSM/F581.998/B(vol3)

Souvenirs [of Sydney], c. 1865, from Rogers family scrapbook
Chromolithograph
C Adler, Hamburg
vol. 2, following page 7
Presented by Mr Richard Rogers, 1993
PXA 664

Peter Lyssiotis (artist)
'Hibiscus Stamen and Petal', in Humphrey McQueen & Peter Lyssiotis, Men of Flowers, 2009
Melbourne
n.p.
Purchased from Douglas Stewart Fine Books, 2010
F/1629

LIGHT AND BYTE: PHOTOGRAPHY AND DIGITAL IMAGES

Reproduced on text panel:
Robert Hallams (photographer)
No. 2 Young Pde, Eastwood, 1968
35 mm colour transparency
SLIDES 53/773

Robert Vincent Hallams (photographer)
Selection of 35 mm Kodachrome transparencies of suburban gardens, Sydney and New South Wales, 1962–83
SLIDES 53

Audio: Interview with Richard Aitken regarding Robert Vincent Hallams' transparencies
Running time: about 2 minutes 20 seconds

Taylor Cullity Lethlean (TCL) (landscape architects & urban designers) and Tonkin Zulaikha Greer (TZG) Architects
National Arboretum Canberra, 2005–16
Digital images, including computer-aided design drawings, photographs and interpretative panels
Reproduced courtesy Taylor Cullity Lethlean and National Arboretum Canberra

ARTISTRY AND TECHNIQUE: PAINTINGS AND DRAWINGS

Reproduced on text panel:
Artist unknown (formerly attributed to Thomas Watling)
A Direct North General View of Sydney Cove, c. 1794
Oil on canvas
Presented by Sir William Dixson, 1929
DG 60

John Lewin (artist)
'Ricinus, Norfolk Is., Caster Oil', in 'Botanical Sketches of Australian Plants', 257 sheets, hinged into booklets, n.d., c. 1803–06
Watercolour, pen, ink and pencil
Purchased from Mrs Alsop, 1911
SAFE/PXC 304/Box 3 /196

John Richardson Glover (illustrator)
Mill's Plains, Morven District, Van Diemen's Land [Patterdale farm], 1835
Ink and wash on paper
Lent by WL Crowther Library, Tasmanian Archive and Heritage Office

Edna Walling (landscape designer & artist)
'Garden Plan for Mr and Mrs AK Oak Rhind', 1928
Watercolour, pen, pencil, ink and wash on cream paper
State Library of Victoria (H2001.240/1), Gift of Mr Glen Wilson, 2001

Catherine O'Neill (garden designer & artist)
'offhand manor ... Plan of garden for Joan Simms & John Hennessy', 2009
Pencil, ink and watercolour
Private collection

THE GARDEN COMMISSION

Dr Lisa Cooper & Benja Harney (artists)
The Garden, 2016
Paper, pipe cleaners and glue
Commissioned by the State Library of NSW, 2016



The new book *Planting Dreams: Shaping Australian Gardens* by Richard Aitken (NewSouth Books) is available now at the Library Shop for \$49.99.

Celebrate the artistry and imagination that have shaped Australian gardens. Respected garden historian Richard Aitken explores the environmental and social influences that have helped produce our unique gardening culture – from Indigenous land management and the earliest European garden at Farm Cove, to the potted plants and besser-block screens of mid-20th-century modernist design and beyond.

A range of exhibition merchandise is also available, including postcards, lens cloths, pot stands, magnets, notepads, pocket mirrors, bookmarks, coasters and more.

Events

Come along to talks, workshops, discussions and exciting events associated with both *Planting Dreams* exhibitions, *Shaping Australian Gardens* and *Grand Garden Designs*.

Please check our website for a full events program: www.sl.nsw.gov.au/events

Become a Friend

Become a friend of the Library and receive exclusive benefits, including special events, entry to competitions, our quarterly *SL* magazine, weekday access to our Friends Room and a 10% discount at the Library Shop and cafe. Call (02) 9273 1593, or email <friends@sl.nsw.gov.au>.

Discover more

LEARNING

Educator-led learning programs are available for students. Please email <learning.library@sl.nsw.gov.au> to make a booking, or find supporting learning resources at <www.sl.nsw.gov.au>.





WEBSITE

Visit the Library's website to explore our collections and for stories, interviews, discussion and exhibition-related resources <www.sl.nsw.gov.au>.

CONNECT WITH US

Share your garden inspirations at #dreamgarden

Connect with us at:

-  <https://twitter.com/statelibrarynsw>
-  www.facebook.com/statelibrarynsw
-  www.sl.nsw.gov.au/about/collections/flickr.html
-  [instagram.com/statelibrarynsw](https://www.instagram.com/statelibrarynsw)



COLLAGE DETAILS:

Illustration: Caricature of Joseph Banks, in M Darly, *The Botanic Macaroni*, 1772

Couple: Diagram of a 'Ha Ha', Humphry Repton & J Adey Repton, *Fragments on the Theory and Practice of Landscape Gardening*, 1816

Tile: Knot garden, in William Lawson, *A New Orchard & Garden ...*, Hannah Sawbridge, London, 1683

Painted silhouette: 'Melon', in George Brookshaw, *Pomona Britannica; or, A Collection of the Most Esteemed Fruits at Present Cultivated in Great Britain ...*, 1817; and Gotthilf Heinrich von Schubert, *Naturgeschichte des Pflanzenreiches in Bildern*, Stuttgart and Esslingen, 1853–54, plate 17, Daniel Solander Library, Royal Botanic Garden Sydney (SC 580.12/S5)



www.sl.nsw.gov.au
#dreamgarden